

VITERBI SCHOOL OF ENGINEERING PHD STUDENT HOUSING

USCHousing

USC Housing is offering safe, convenient, and fully-furnished housing at competitive rates in Sierra Apartments to PhD graduate students in the Viterbi School of Engineering. Since apartments are prioritized for program participants, it provides residents the opportunity to live and study alongside their roommates—other Viterbi students. The program offers convenient twelve month housing contracts.

Spaces in the program will be assigned first-come, first-served based on application date. Priority will be given to students submitting their applications to USC Housing by April 18, 2025. Housing applications will continue to be accepted after April 18, with assignments made on a space available basis.

Sierra (SIE) is located in North University Park, about three blocks from campus, where most of the university's graduate students live. It is within USC's Department of Public Safety's patrol zone and close to public transportation.

Contract Dates:

Graduate Full Year (12 Month) Contract

- Start: Monday, August 11, 2025, 8:30 AM
- End: Friday, July 31, 2026, 5:00 PM

Dates are for continuous occupancy during the contract period—apartments do not close for university breaks.

Room Types:

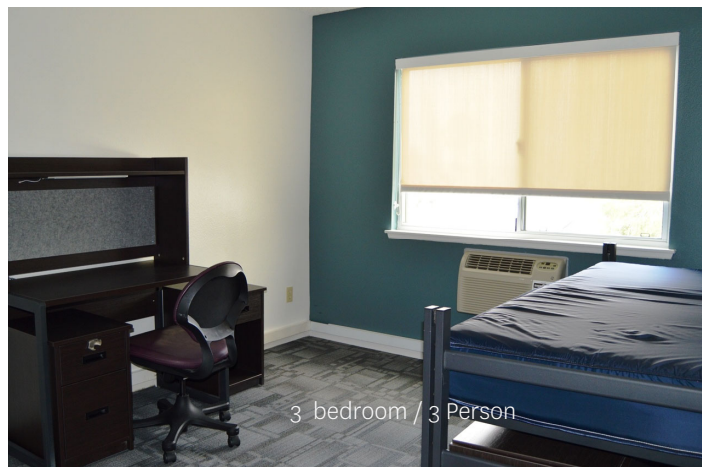
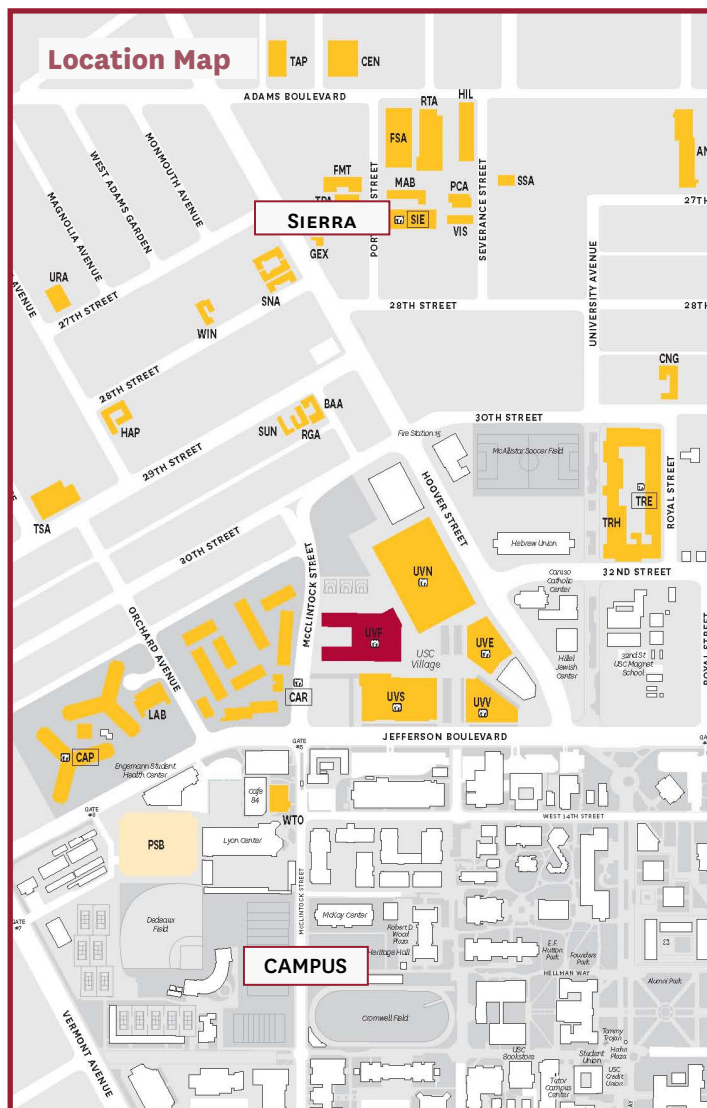
Sierra's floor plan provides three bedrooms for three residents, with a shared bathroom, kitchen and bartop dining area.

Rent*:

- 3 Bedroom / 3 Person: \$1,510 per person, per month*

Utilities:

All utility charges are included in the rent.



More information, including links to all the services offered by USC Auxiliary Services can be found on our website at housing.usc.edu



Sierra Apartments

2638 Portland Street

Amenities:

- Each resident has a full extra long (54" by 80") bed and a desk and four dresser drawers.
- The full kitchen is equipped with a stove, full-size refrigerator, and sink. Residents will need to provide their own linens, small appliances and kitchen-ware.
- Individual air-conditioning units in each bedroom.
- Cable TV service, including HD channels, and high speed WiFi Internet service are included in the rent.
- Laundry and recreation rooms.

Parking and Transportation:

Spaces in the enclosed parking garage at Sierra are assigned by USC Transportation Services on a first-come, first-served basis and not all residents are ensured a space. Please check the Transportation website at: www.usc.edu/parking for more details .

There is a USC bus route stop right in front of Sierra; buses run between housing locations and the main campus.

Facility Description:

A large three story apartment building with a ground-floor garage, Sierra has a lounge and a spacious patio for residents' relaxation. It is home to the area's Customer Service Center.



3 bedroom / 3 Person



Kitchen and Bartop Dining Area

* Information, including rents, is accurate as of the time of publication. The availability of listed housing accommodations and programs are subject to change based on local health authority restrictions and guidelines.



SIE

SIERRA APARTMENTS
TYPICAL 3 BEDROOM APT PLAN

APPLICATION AND CONTRACTING

Apply on-line at:

<https://usc.starrezhousing.com/StarRezPortalX>

New, incoming students may apply for housing once they have been admitted to the university and been issued a ten digit USC student identification number. *Online application for academic year 2025-2026 will be available February 3, 2025.*

In order for your application to be processed correctly it is **essential that you do the following** when applying:

- Select the “Graduate Full Year” (12 month) term
- List room types in Sierra as your housing preferences
- Select “Viterbi School of Engineering” as your graduate housing program

Housing Term

Viterbi School of Engineering Graduate students should *only* request the “Graduate Full Year (12 month)” term.

Application

Begin your application by selecting ‘Continue’

‘Personal and Contact Details’

‘Specific Accommodation Request’

Indicate here if you have any special physical or medical needs we should consider when making your assignment. (You must register with Office of Student Accessibility Services if you require specific housing.)

‘Profile’

This information can be used for roommate matching.

‘Application Category’

Newly admitted students should choose “New to USC”.

‘List Housing Preferences’

Be sure to list preferences in Sierra *only*. Applicants for the Viterbi School of Engineering Program will be considered for Sierra spaces *only*.

‘Graduate Program’

Choose “Viterbi School of Engineering” as your graduate housing program.

‘Pay Application Fee’

USC Housing cannot process your application without payment of the \$60 non-refundable application fee. (This fee cannot be waived.) Payment can be made by Visa, Mastercard, American Express or Discover cards.

At this point your application is complete. You have the option to continue on to request specific roommates or search for compatible roommates.

‘Roommates’

If you would like to request a specific roommate from among the students applying for Viterbi School of Engineering Graduate Housing, you can form or join an existing Roommate Group with that person on our application portal. Roommate requests must be mutual and you must both be of the same gender.

You may later request a specific roommate in writing by contacting USC Housing.

Roommate requests cannot be guaranteed.

Assignments

Priority will be given to Viterbi School of Engineering Graduate applicants who apply by April 18, 2025.

Applicants not assigned initially will be placed on a wait list and assigned if and when spaces come available through cancellation.

Once you have been assigned, you will be notified by e-mail and directed to the USC Housing web site to review and confirm your contract.

‘Housing Assignment’

Log back on to the portal and check this step to view your assignment.

Contracts

‘Pay Confirmation Fee’

Your \$800 confirmation payment should be submitted electronically by Visa, Mastercard, American Express or Discover cards. Half of this fee will be credited back to you in the fall semester and half in the spring semester.

‘Contract and Finish’

Here you will confirm your housing contract and agree to the terms of the Living Agreement.

- If you do not confirm the acceptance of your contract and make the confirmation payment by the due date indicated, your assignment will be cancelled and given to another applicant.

Cancellations

If you decide to cancel your application prior to being assigned or cancel your housing assignment prior to confirming your contract, print out and complete the cancellation form available on our website and send it to USC Housing Services. The application or assignment will be cancelled; the \$60 processing fee will *not* be refunded.

Once you have confirmed your contract and made the confirmation payment, you are responsible for the terms of the contract. You may, however, request cancellation by submitting a cancellation form.

- If your cancellation is granted by June 6, 2025 you will receive a refund of the contract-confirmation payment.
- If your cancellation is granted after June 6, you will not be eligible for a refund of any portion of the contract confirmation payment, even if you decide to withdraw from the university.
- If your cancellation request is not granted, your contract will be in force and you will be held to its provisions.

The availability of listed housing accommodations and programs are subject to change based on local health authority restrictions and guidelines.