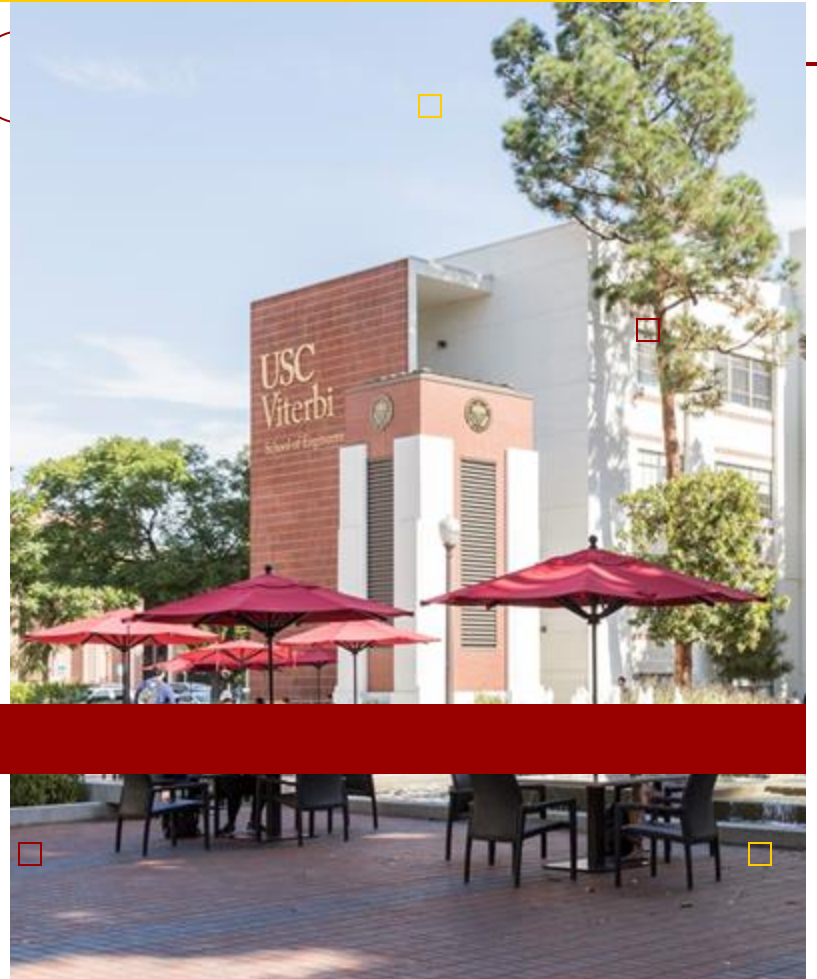


# Fall 2026 Academic Webinar


Astronautical Engineering Programs



# Agenda

---



- 01 Department Introductions
  - 02 Degree Requirements
  - 03 Registration Information
  - 04 Contacting Your Advisor
  - 05 Important Dates & Next Steps
  - 06 Resources
  - 07 Program Breakout Rooms
  - 08 Frequently Asked Questions and Q&A
- 

# Meet Your Advisor!



**Zoe Ashmead**

Chemical Engineering and  
Materials Science



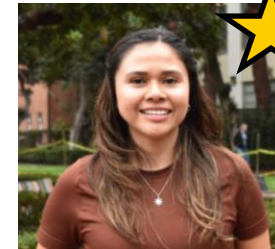
**Lilian Leung**

Biomedical Engineering



**Emily Millard**

Civil and Environmental  
Engineering



**Prisila Cisneros Vasquez**

Astronautical Engineering

.....

# Academic Advising

Advisors support the academic journey of students by providing resources and program requirement information, which contribute to the students' understanding and overall academic success.

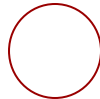
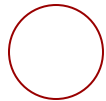
Hours of Operation  
Monday - Friday  
9:00AM - 5:00PM

## Viterbi Student and Academic Services (VSAS)

- DEN@Viterbi
- Reduced Course Load (RCL)
- Curricular Practical Training (CPT)
- Optional Practical Training (OPT)
- Program Extension (PE)
- Leave of Absence (LOA)

## Assigned Advisor

- Registration Inquires
- Course Planning
- Personal Wellness
- Academic Performance Concern
- Course withdrawal plans
- Engagement opportunities



# Advising at Viterbi

Viterbi views advising as a collaborative partnership between students and advisors.



## Advisors support students academic journey by:

- Guiding students through policies, processes, and academic planning
- Providing guidance on program and degree requirements
- Connecting students with other campus offices and resources when needed

## Actively engage in their education by:

- Familiarize with the University Catalogue
- Review STARS Report regularly to track degree progress
- Track Holds
- Take ownership of your academic performance and progress



02

# Degree Requirements

# USC Catalogue

The USC Catalogue is the official university source for important information regarding policies, procedures, degree, and graduation requirements

The Catalogue is updated every academic year - it is important to ensure that you are reviewing the Catalogue that is relevant to your academic year (catalogue year).

<https://catalogue.usc.edu/>

Catalogue Search

Entire Catalogue

Search Catalogue

Whole Word/Phrase

[Advanced Search](#)

[Catalogue Home](#)

---

[About USC](#)

---

[Administration](#)

---

[Admission and Orientation](#)

---

[Tuition and Fees](#)

---

[Academic Calendar](#)

---

[The Schools and Academic Units](#)

---

[Programs, Minors and Certificates](#)

---

[Programs by School](#)

## USC Catalogue 2025-2026



# Policies

The university lists academic policies that students must comply with in order to graduate with their degree program.

<b>GPA</b>	Graduate students are required to maintain a B average (3.0 GPA) while enrolled in a master's program. <ul style="list-style-type: none"><li>•Both in their <u>applied</u> and <u>overall</u> GPAs.</li></ul>
<b>Passing Grade</b>	Minimum of a C or better. Pass/No Pass option is NOT allowed.
<b>Continuous Enrollment</b>	All students must be enrolled in fall and spring terms. Summer is optional. <ul style="list-style-type: none"><li>• Must request Leave of Absences for fall or spring (maximum 4)</li></ul>
<b>Time Limit</b>	Graduate students have 5 years to complete their degree program.
<b>Academic Integrity (<a href="#">link</a>)</b>	There are serious consequences to cheating and plagiarism.

03

# Registration

.....

# Course Load

- Part-time students: 1 course (1-4 units)
- Full-time students: 2-3 courses (8-9 units)
  - Not required for domestic students
  - International master's students must be in 8 units

Students must register for at least 1 course each fall and spring semester to satisfy continuous enrollment.

# Course Load Considerations

Course load may vary based on:

- Work status and duties
- Financial aid/ scholarship requirements
- Personal responsibilities
- Student health insurance

Be aware that the number of units you are enrolled in each semester **can affect financial aid, student health insurance, visa status, etc.** Speak to the offices you are associated with to discuss your enrollment status plans with ample time.

# Pre-requisites and Waivers

▼ ASTE-571: Solid Rocket Propulsion

Fundamental concepts, implementation and applications of solid rocket propulsion. Propellants, performance, ballistics, structures and systems used for space launch vehicles, sounding rockets and rocket motors.

PRE-REQUISITES: ASTE-575



Section	Session	Type	Units	Registered	Time	Days	Instructor	Location	
28490 R	048	Lecture	3.0	6 of 30	07:00pm-09:40pm	T	Reese, David	RTH105	<a href="#">Add to myCourseBin</a>
28491 D	034	Lecture	3.0	1 of 40	07:00pm-09:40pm	T	Reese, David	DEN@Viterbi	<a href="#">Add to myCourseBin</a>

A pre-requisite is a course that needs to be taken prior to the desired class.

- Depending on the class, students can request a waiver.

Process for Prerequisite Waiver:

- Each department may have its own unique process. Visit their department website for more information.

# D-clearance

- A “D” listed after the section number indicates that D-clearance (permission) is required before you can register for the course.
- A section number without a “D” does not require clearance, so you can register immediately.

## ▼ MASC-503: Thermodynamics of Materials

Classical thermodynamics, chemical potential, pure phases and mixtures; interphase relationships; binary and ternary solutions; free energy and activity; galvanic cell, electrochemical potential and Pourbaix diagram.

Section	Session	Type	Units	Registered	Time	Days	Instructor	Location	
32140 D	034	Lecture	4.0	2 of 15	04:00pm-05:50pm	MW	Branicio, Paulo	DEN@Viterbi	<a href="#">Add to myCourseBin</a>
32142 R	048	Lecture	4.0	10 of 56	04:00pm-05:50pm	MW	Branicio, Paulo	OHE100D	<a href="#">Add to myCourseBin</a>

## ▼ MASC-551: Mechanical Behavior of Engineering Materials

Mechanical properties of materials; macroscopic mechanical behavior related to structure and microstructure of the material; elementary dislocation theory related to basic strengthening mechanisms; fatigue and fracture; nanomaterials. NOTE: Recommended Preparation: Undergraduate introduction to chemistry and the equivalent of MASC 310.

Section	Session	Type	Units	Registered	Time	Days	Instructor	Location	
32189 D	048	Lecture	4.0	14 of 40	10:00am-11:50am	TTh	Packard, Corinne	OHE100C	<a href="#">Add to myCourseBin</a>
32190 D	034	Lecture	4.0	11 of 20	10:00am-11:50am	TTh	Packard, Corinne	DEN@Viterbi	<a href="#">Add to myCourseBin</a>

# Requesting D-clearance

D-clearance for Viterbi courses is done through myViterbi.

- Outside of Viterbi: visit department website for directions

<b>On-Campus Section</b>	For OC and DEN@Viterbi students: <ul style="list-style-type: none"><li>• Request d-clearance through MyViterbi&gt;&gt; D-clearance Request Manager &gt;&gt; Select Department</li><li>• Processing timeline is 3-4 business days.</li></ul>
<b>DEN@Viterbi Section</b>	DEN students <ul style="list-style-type: none"><li>• Some classes may require d-clearance. More information to come</li><li>• Request d-clearance through MyViterbi&gt;&gt; D-clearance Request Manager&gt;&gt; <b>DEN@Viterbi</b> D-clearance Request</li><li>• This is only visible to DEN@Viterbi students</li><li>• Processing timeline is 3-4 business days.</li></ul>

# Requesting D-clearance

- Advisement Appointment System
- Apply for an hourly position to support a class (eg. Grader, etc..)
- **D-Clearance Request Manager**
- DEN Petition Request Form
- Directed Research
- Graduate Academic Verification Form for Program Extension
- Instructional Software Distribution
- Internship Course Request Form
- Learning Environment Services Manager
- Optional Practical Training Graduation Verification Form
- Out of Sequence
- Placement Exam Registration (EE)
- Pre-Req Waiver Request Manager
- Progressive Degree Program
- Purchase Order Request Tool (PORT)
- Secure Document Uploader
- Temporary Removal of Verification of Degree Holds
- VASE Program Certificates
- Viterbi Service Desk
- Withdrawal Request
- Women in Engineering Mentorship

# Requesting D-clearance: On-Campus

To request D-Clearance for an **On-Campus section**, select the department from the links below:

- [Aerospace and Mechanical Engineering](#)
- [Civil & Environmental Engineering](#)
- [Computer Science and Data Science](#)
- [Daniel J. Epstein Department of Industrial and Systems Engineering](#)
- [Ming Hsieh Department of Electrical and Computer Engineering](#)
- [The Mork Family Department of Chemical Engineering and Materials Science](#)

*Note: If the department you wish to request D-Clearance from is not listed above that means this system is not active for those classes at this time. Please contact your student advisor to find out when D-Clearances will be available for that department. D-Clearance requests for courses outside of Viterbi are managed by that department. Please contact them directly.*

# Requesting D-clearance: DEN@Viterbi

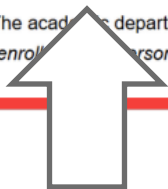
## D-Clearance Request Manager

### DEN@Viterbi D-Clearance:

To request D-Clearance for a DEN@Viterbi section, click on the **DEN@Viterbi D-Clearance Request** link below.  
The link will list all DEN@viterbi course sections for all academic departments.

### DEN@Viterbi D-Clearance Request

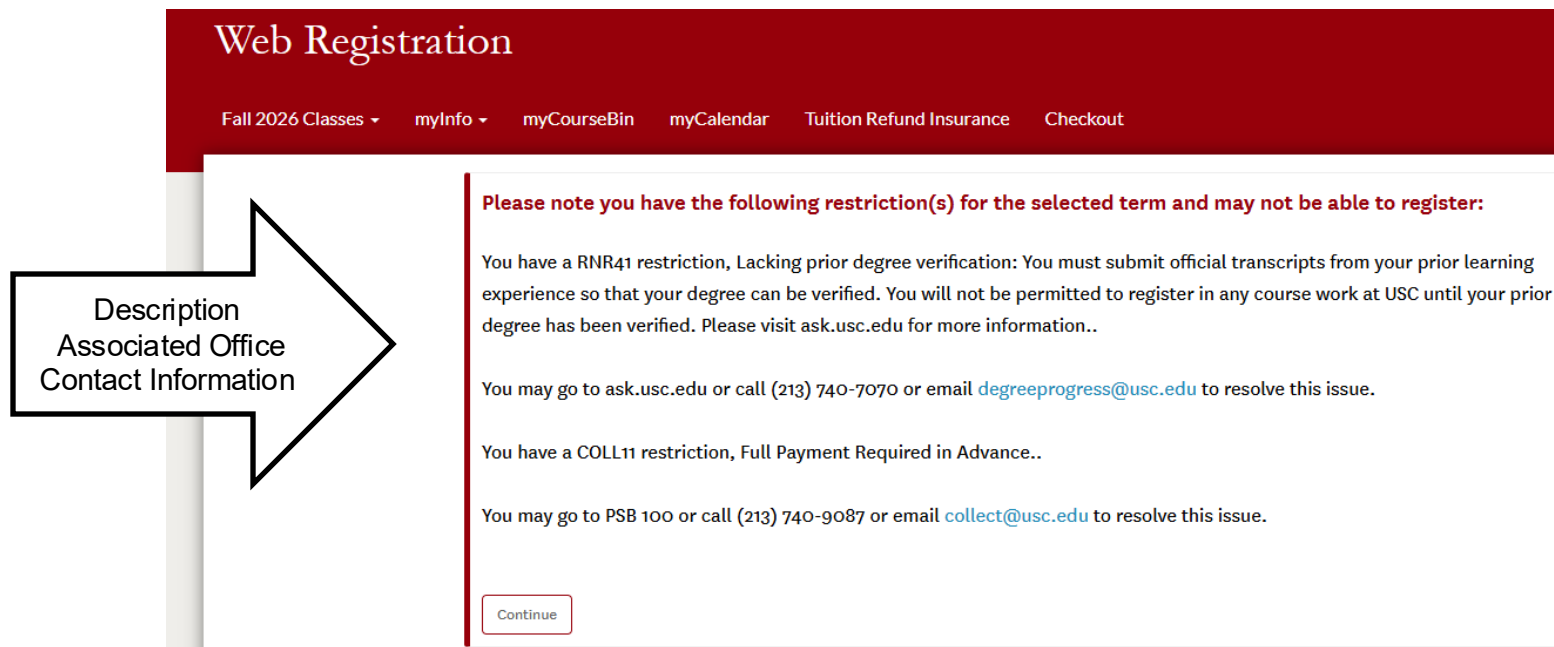
**\*\*Important:** The academic department links below are intended solely to request D-Clearance for on-campus sections.  
*Students who enroll in an in-person section must adhere to the in-person course instructions, policies, and requirements.*



Click **highlighted** link

# Account Holds

When logging into Web Registration, holds will be listed at the beginning before continuing to class offerings.



**Web Registration**

Fall 2026 Classes ▾ myInfo ▾ myCourseBin myCalendar Tuition Refund Insurance Checkout

**Please note you have the following restriction(s) for the selected term and may not be able to register:**

You have a RNR41 restriction, Lacking prior degree verification: You must submit official transcripts from your prior learning experience so that your degree can be verified. You will not be permitted to register in any course work at USC until your prior degree has been verified. Please visit [ask.usc.edu](http://ask.usc.edu) for more information..

You may go to [ask.usc.edu](http://ask.usc.edu) or call (213) 740-7070 or email [degreeprogress@usc.edu](mailto:degreeprogress@usc.edu) to resolve this issue.

You have a COLL11 restriction, Full Payment Required in Advance..

You may go to PSB 100 or call (213) 740-9087 or email [collect@usc.edu](mailto:collect@usc.edu) to resolve this issue.

Continue

**Description**  
**Associated Office**  
**Contact Information**

# Account Holds

Holds can also be found on  
Experience USC > My  
Academics > Restrictions

The screenshot shows the 'My Academics' page for a student named Kara Santos. The main section is 'My Fall 2024 Registered Courses', which includes a table of courses and a notification about activity restrictions.

UTC/CR	SUN	MON	TUE	WED	THU	FRI	SAT	TBA
10 am		DES 303 [2042], Lecture OnSite	BUCO 450 [2049], Lecture TBA 202	DES 303 [2042], Lecture OnSite	BUCO 450 [2049], Lecture TBA 202	DES 303 [2042], Lecture OnSite		CRT 245 [3059], Lecture ATK 203
11 am						DES 303 [2042], Lecture OnSite		CS 225 [3054], Lab [3049] 101
12 pm						DES 303 [2042], Lecture OnSite		
1 pm		CS 256 [2048], Lecture HAR 101		CS 256 [2048], Lecture HAR 101				
2 pm			CS 2... [3022]... [3078] ATK 2...	CS 4... [3022]... [3078] ATK 2...		CS 2... [3022]... [3078] ATK 2...	CS 4... [3022]... [3078] ATK 2...	

**Notification:** You have 3 activity restrictions for Fall 2024 semester. [View Registration Information >](#)

**Registration Appointment Date Begins:** 11:00 AM PST

**Students of Responsibility >**

**My Academics**  
Get informed on your student records and resources.

**My Fall 2024 Registered Courses** [View Other Semesters >](#)

Changes made to your registered courses in other systems may take some time to reflect in Experience USC.

**Kara Santos**  
She / Her / Hers  
USC ID: 1804-0914-47  
Major/Program: Bachelor of Science,  
Expected Graduation: May 2026  
1 more active major/program  
[Edit Profile](#)

**Brightspace**  
USC's Online tracking and learning platform for students and faculty.  
[Visit Brightspace](#)

**Advise USC**  
Visit Advise USC to schedule advisor appointments and create course plans.  
[Access Advise USC](#)

Description  
Associated Office  
Contact Information

# Common Account Holds

Hold	Description	How to Address Hold
STU 50	Restricts registration and USCard application <b>(prevents registration)</b>	Complete <u>Immigration Status Verification (ISV)</u> with OIS upon arrival in the U.S.
ADM 40	Degree Verification <b>(allows registration)</b>	Verify previous degree(s) with USC <u>Office of Degree Progress</u> . Deadline for all degree verifications is <b>by the end of your first semester.</b>
ADM 20	Conditional Admission <b>(<u>allows</u> registration)</b>	See your Admission Letter for any specific conditions.

# Registration Checklist

Be sure to resolve all registration check list items, as each may impact registration. Resolving or submitting a request for one does not mean it solves all.

<b>Prerequisites</b>	A class that must be completed before enrolling in another course.
<b>Department clearance</b>	Classes with a "D" next to the section number placed by department.
<b>Holds</b>	Restrictions that need to get resolved. Some prevent registration.
<b>Registration Permit</b>	The earliest date and time you are assigned to register for the next term.



# 04

## Contacting Your Advisor



.....

---

# How to Reach Advisors – Create a Case

Experience USC > Advise USC > Create a Case

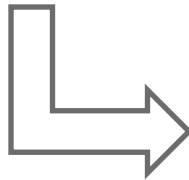


Search...

Search



Home **Advisor Connect** Advising Notes Success Plans Course Plans



Home **Advisor Connect** Advising Notes Success Plans Course Plans



Advisor Connect

## My Cases

Your Case comments may be visible to other advisors at USC beyond those in your success team. In many cases, advisors work together to help answer questions and resolve issues.

Use the button below to contact your advising team or start a referral to another program.

Create a New Case

# How to Reach Advisors – Schedule Appointment

Experience USC > Advise USC > Make an Appointment

The screenshot displays the USC Advise USC website. At the top, there is a search bar and navigation links for Home, Advisor Connect, Advising Notes, Success Plans, and Course Plans. A banner image shows graduates with the text "Hello, Alan! Welcome to Advise USC." Below the banner, there are two main sections: "My Tasks" and "My Appointments".

**My Tasks:** This section features a folder icon and the message "You're all caught up" with "No Tasks." below it.

**My Appointments:** This section has a blue button labeled "Schedule an Appointment" with a red arrow pointing to it. Below the button are tabs for "Upcoming", "Past", and "Cancelled". The "Upcoming" tab is active, showing a calendar icon and the text "No appointments to show." followed by the prompt "Something on your mind? Schedule an appointment to speak with someone."

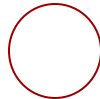
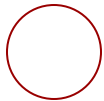
# Cases vs. Appointment

## Case

- D-clearance
- Prerequisite waiver inquiries
- Class conflicts
- Holds (ADM21, ADM41, etc.)
- Request to sign a form
- Waiting for a response on a case

## Appointment

- Leave of Absence
- Personal Wellness
- Academic Performance Concern
- Course withdrawal plans
- Moving the conversation from email to appointment



# Email communication

When sending an email, please include detailed information about your inquiry to avoid delays.

Please include in all communication:

- From USC Email
- Name
- USC ID
- Course section numbers
- Subject line with issue/topic
- Allow 2-3 business days for a response

 We encourage respectful and professional communication when interacting with staff and faculty members.

.....



05

## Next Steps & Important Dates



.....

.....



# Next Steps and Important Dates

## Next Steps

- Review [New Student Website](#)
- Submit d-clearance requests (if necessary)
- Register for Fall 2026 courses
- Make tuition and fees payment by August 21st to avoid a late fee.

## Important Dates

- International Student Session- July 6 (Zoom)
- On-Campus Student Orientation
  - Part 1- August 17 (online)
  - Part 2- August 18 (in-person)
- DEN@Viterbi Orientation
  - Part 1- July 22nd
  - Part 2- July 23rd
- Last day to register and settle without a late fee- August 21
- Fall semester classes begin- August 24th

Click [here](#) for website with this information!!

## USC Viterbi School of Engineering NEW STUDENT CHECKLIST(M.S.)

Review the checklists below, as each item may have its own deadline.

### BEFORE YOU ARRIVE

- Activate your USC email and NetID. *This is where you'll receive all future emails from USC.* [LINK](#)
- Attend Department Academic Webinar. *Get all the info you need to register for courses!* [LINK](#)
- Access ExperienceUSC (access available after June 3) [LINK](#)
- Review the [Schedule](#) of Classes and process to register. [LINK](#)
- Review immunizations and screening requirements. [LINK](#)
- Register for the Viterbi Orientation / New Student Welcome [LINK](#)
- Research housing options with USC and non-USC Housing [LINK](#)
- **INTERNATIONAL STUDENTS:** [LINK](#)
  - Review USC policies around the International Student Exam (ISE) or Teaching Assistant Exam (ITA). If preferred, you can take the TOEFL or IELTS again to avoid taking the ISE.
  - Bring all original diplomas and transcripts to prepare for degree verification.
  - Attend the [International Students Information Session](#) July 6 at 9:00 AM (PST)

### AFTER YOU ARRIVE

- Get your USC ID Card [LINK](#)
- Attend Orientation Part I (Online) August 17, 2026 [LINK](#)
- Attend Orientation Part II (On Campus) August 18, 2026 [LINK](#)
- Waive USC insurance or add dental coverage (optional) [LINK](#)
- Settle your tuition through USCe.pay [LINK](#)
- Complete Degree Verification (if applicable) [LINK](#)
- Complete Mandatory Training for Graduate Students [LINK](#)
- **INTERNATIONAL STUDENTS:** [LINK](#)
  - Complete Immigration Status Verification (ISV)
  - Review the [schedule](#) of classes and the process to register
  - Take the ISE or ITA exam (if applicable)

## USC Viterbi School of Engineering NEW STUDENT TIMELINE (M.S.)

To ensure a successful transition to USC Viterbi, we have highlighted these important resources and activities.

- ASAP** [LINK](#)
  - Make sure to activate your USC email and [NetID](#).
  - The Viterbi School and academic department will communicate important information with you via your USC e-mail only.
- JUNE 2026** [LINK](#)
  - **MS ACADEMIC WEBINARS**
    - The Academic Webinar is an online information session for Master's students where advisors will introduce the department and give you all the information you need to register for courses. Invitation coming soon via your USC email.
- JUNE 2026** [LINK](#)
  - **MENTORSHIP PROGRAM**
    - The Viterbi Graduate Mentorship Program pairs up new students with a continuing student mentor in the same academic department to help with a smooth transition to USC. Invitation coming soon via your USC email.
- JUNE-JULY 2026** [LINK](#)
  - **NEW STUDENT HOT TOPIC VIDEOS**
    - A series of videos focusing on various transition topics for incoming students. Topics include: *Academic Advisement, Course Registration, English Proficiency, Career Connections, and Student Engagement.*
- JULY 2026** [LINK](#)
  - **INTERNATIONAL STUDENT SESSION**
    - This session will provide pre-arrival guidance, an overview of enrollment requirements, and an overview of the different academic verifications Viterbi provides for its international students throughout their program.
- AUGUST 2026** [LINK](#)
  - **ORIENTATION PART I**
    - A mandatory online immersion experience to introduce key resources and explain immigration policies for international students.
    - Opportunities for you to start building your network at Viterbi.
- AUGUST 2026** [LINK](#)
  - **ORIENTATION PART II**
    - A mandatory in-person experience to get familiar with campus resources and engage with Viterbi faculty, advisors, and students.

06

# Resources



# Websites, Portals, and Tools

## Experience USC - My Academics

- Holds
- STARS Report
- Grade Report

## Experience USC - Advise USC

- Advising Appointments
- Create a case
- Advising Notes

## WebReg

- Course Bin
- Register for classes
- Restrictions
- Class availability

## myViterbi

- D-clearance
- Leave of Absence
- Application to Graduate

## Schedule of Classes

- Tuition rates
- Semester deadlines
- Syllabi
- Class availability

## Department Website

- Requirements
- Information about processes
- Registration resources



# Department Break Out Room

# ..... Department Introduction

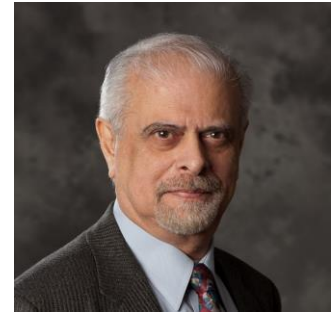
---



Dr. Dan Erwin  
**Department Chair**



Dr. Joseph Wang  
**ASTE Graduate Program  
Director**



Dr. Azad Madni  
**SAE Graduate  
Program Director**

# Programs

## Astronautical Engineering

### Master's Degree Program (MS ASTE)

- 27 units (9 courses)
- Thesis not required

### Graduate Certificate Program

- 12 units (4 courses)

## Systems Architecting & Engineering

### Master's Degree Program (MS SAE)

- 27 unit minimum (9 courses)
- Thesis not required

### Graduate Certificate Program

- 15 units (5 courses)

# M.S. in Astronautical Engineering – 27 units

## Four Core Requirements (12 units)

- ASTE 575 | Spacecraft Propulsion
- ASTE 520 | Spacecraft System Design
- ASTE 535 | Space Environments and Spacecraft Interactions
- ASTE 580 | Orbital Mechanics I

## Elective Courses (15 Units)

- **3 Core Electives:** ASTE 500-level courses
  - Concentrations available
- **2 Technical Electives:**
  - Additional ASTE courses listed in the core elective list
  - Courses from other engineering departments must be approved by Dr. Wang. Registering before approval comes with risk that it will not be degree applicable.
  - 400-level courses (6 units maximum)

# M.S. in Systems Architecting & Engineering – 27 units

## Required Courses (18 Units)

- SAE 549 | Systems Architecting
- SAE 541 | Systems Engineering Theory and Practice
- SAE 542 | Advanced Topics in Systems Engineering
- SAE 547 | Model-Based Systems Architecting & Engineering
- SAE 548 | Systems/System-of-Systems Integration & Communication
- SAE 580 | Artificial Intelligence for Systems Engineers

## Elective Courses (9 Units)

- SAE Elective (3 units): Any other SAE course
- Technical Specialization Area: 2 classes within the same Viterbi departments or same topic
  - project management, machine learning, mechanics, structural engineering, spacecraft, etc.

# Graduate Certificate Programs

## Astronautical Engineering

- 12 units total
- Pick 4 500-level courses within the ASTE GCRT listing

## Systems Architecting & Engineering

- 15-17 units total
- Pick 5 classes from the GCRT catalogue listing

Transferable to master's level programs, pending application and acceptance.

# Things to Consider with Course Planning

With the exception of the faculty members, the majority of the professors are adjunct and lecturers who work full-time within the field. They are professionals from different organizations and update their course material on a regular basis.

- • There is no set order of classes to follow
  - SAE students are recommended to start with SAE 549 or SAE 541

## Tips

ASTE MS and GCRT - Use the ASTE Schedule of Classes to plan ahead

SAE MS and GCRT - Balance frequently offered courses with annual/less frequent courses

Consider aligning career plans and class offerings

- ie promotions, new jobs, pivots, internships, exposure to new concepts

07

# FAQs



# Research



## Master's thesis

A master's thesis is not required. Students interested in pursuing a thesis should speak with their advisor.



## 590 courses

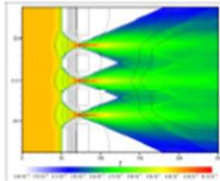
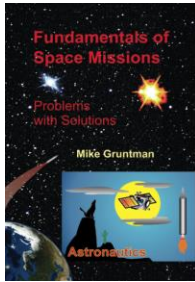


Students have the option to take Directed Research (590 courses) and work under a faculty member to deliver results for a grade

## Other Ways to Get Involved

Volunteering in research labs, projects, or student organizations connected to departments can expand your skills





## Department of Astronautical Engineering Research Areas

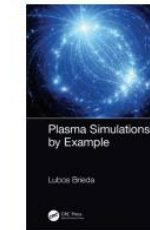
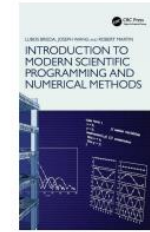
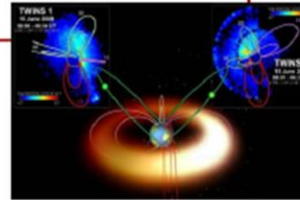


- Astronautics
- Space environment and spacecraft interactions
- Space science
- Space instrumentation and sensors
- Spacecraft propulsion
- Space mission and spacecraft design
- Non-equilibrium processes in gases and plasmas
- Computational physics and high performance computing



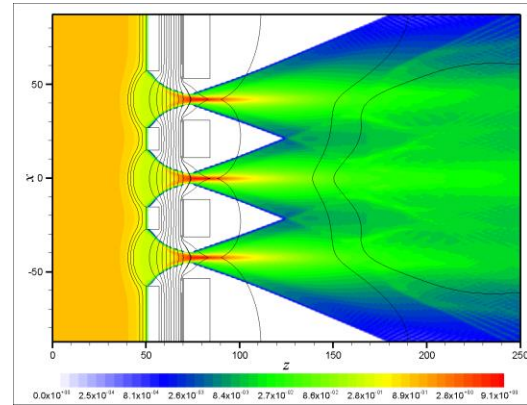
- Faculty are Principal Investigators (PI's) and Co-Investigators (Co-I's) on programs supported by NASA, Air Force, Navy, NSF, industry
- Served on science teams (members, investigators, development, analysis): *Pioneer 10/11*, *SOHO*, *Deep Space 1*, *IMAGE*, *Dawn*
- Current NASA missions Co-I: *TWINS* and *IBEX*

- Student (undergraduate and Master's) projects
  - Rocket propulsion lab
  - Liquid-propulsion lab
  - Lunar lander
  - Student microsattellites and cubesats



# SAE Research Areas

- Model Based Systems Engineering
- Engineered Resilient Systems
- Cyber-Physical-Human Systems
- Augmented intelligence
- Digital Engineering and Digital Twin technology
- AI and ML for Systems Engineering
- Systems Engineering for AI and ML
- Formal Methods in Systems Engineering



Faculty are Principal Investigators (PIs) and Co-Investigators (Co-Is) who work on research sponsored by:

- National Science Foundation
- DoD-Systems Engineering Research Center
- DoD-Acquisition Innovation Research Center
- General Motors
- Boeing Defense Systems
- Boeing Commercial Aircraft

# TRASEE™ Educational Paradigm

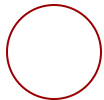
- Transdisciplinary Systems Engineering Education (TRASEE) Paradigm is the basis for core SAE courses
- Draws on relevant material from other related disciplines (e.g., decision analysis, digital engineering, cognitive psychology, social networks, entertainment arts)
- Responsive to needs of 21<sup>st</sup> century SE workforce and their learning proclivities
- Based on *Transdisciplinary Systems Engineering: Exploiting Convergence in a Hyperconnected World* written by Professor Azad M. Madni
- Its pillars are:
  - 21<sup>st</sup> century mindset
  - Science of Learning Principles
  - Storytelling as a pedagogical strategy
  - Hands-on Learning with Digital Twins
  - Implemented in core courses - well-received by students, instructors and employers

# Academic Questions

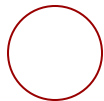
- Can I transfer graduate units into my program?
  - Yes, maximum 4 units or 1 course to transfer for either master's program. Course cannot have been used to earn degree elsewhere.
- Can I take electives from other departments?
  - SAE MS – up to 2 technical specializations
  - ASTE MS – up to 2, only with approval
  - ASTE GCRT - No.
  - SAE GCRT - Only courses listed in catalogue (there are a select few).
- Can I change my master's program to another one within the department?
  - Yes, students can change programs after completing first term and earning a 3.0 GPA (dependent on desired program)

# Academic Questions

- I am an on campus student, can I take one DEN class?
  - On-campus students can submit a DEN Petition to take 1-2 DEN classes throughout their degree. Approval may vary based on location and requests take 2-3 weeks to process.
  - International students: for degree validity in your home country, it's not recommended to take DEN courses
- Can I switch from an on-campus to DEN student?
  - Before first semester starts: Reach out to Viterbi Admissions on their [contact form](#) to review your record and make the change
  - After first semester has begun: email [vaseden@usc.edu](mailto:vaseden@usc.edu) for eligibility.



# Q&A



## Assigned Advisor

- Website:
  - [ASTE Website](#)
  - [SAE Website](#)
- Contact on Advise USC
  - Create a case
  - Appointment

Viterbi Drop-In Hours:  
Tuesdays 3pm – 4pm  
June 16 – August 11  
[Zoom Link](#)

## VSAS Advising

- Email: [vasems@usc.edu](mailto:vasems@usc.edu)
- DEN inquiries: [vaseden@usc.edu](mailto:vaseden@usc.edu)
- Website: <https://viterbigrad.usc.edu/>

International Drop-In Hours:  
Mondays 3pm – 4pm  
[Zoom Link](#)